



**Visit Our Website**

[www.theglobalworld.online](http://www.theglobalworld.online)

[www.theglobaleworld.com](http://www.theglobaleworld.com)





# About us



Global trade definition is the exchange of products between international borders. It is the lifeblood of the world economy since it allows different countries to expand their markets and help in the availability of products that may not be available domestically. As a result, the market faces high competition. The WTO (World Trade Organization) is the only global international organization dealing with the rules of trade between nations, aiming to ensure that global trade flows smoothly, predictably, and as freely as possible. Its key objectives include setting and enforcing rules for international trade, providing a forum for negotiations, resolving trade disputes, and increasing transparency.

[www.theglobalworld.online](http://www.theglobalworld.online)  
[www.theglobaleworld.com](http://www.theglobaleworld.com)

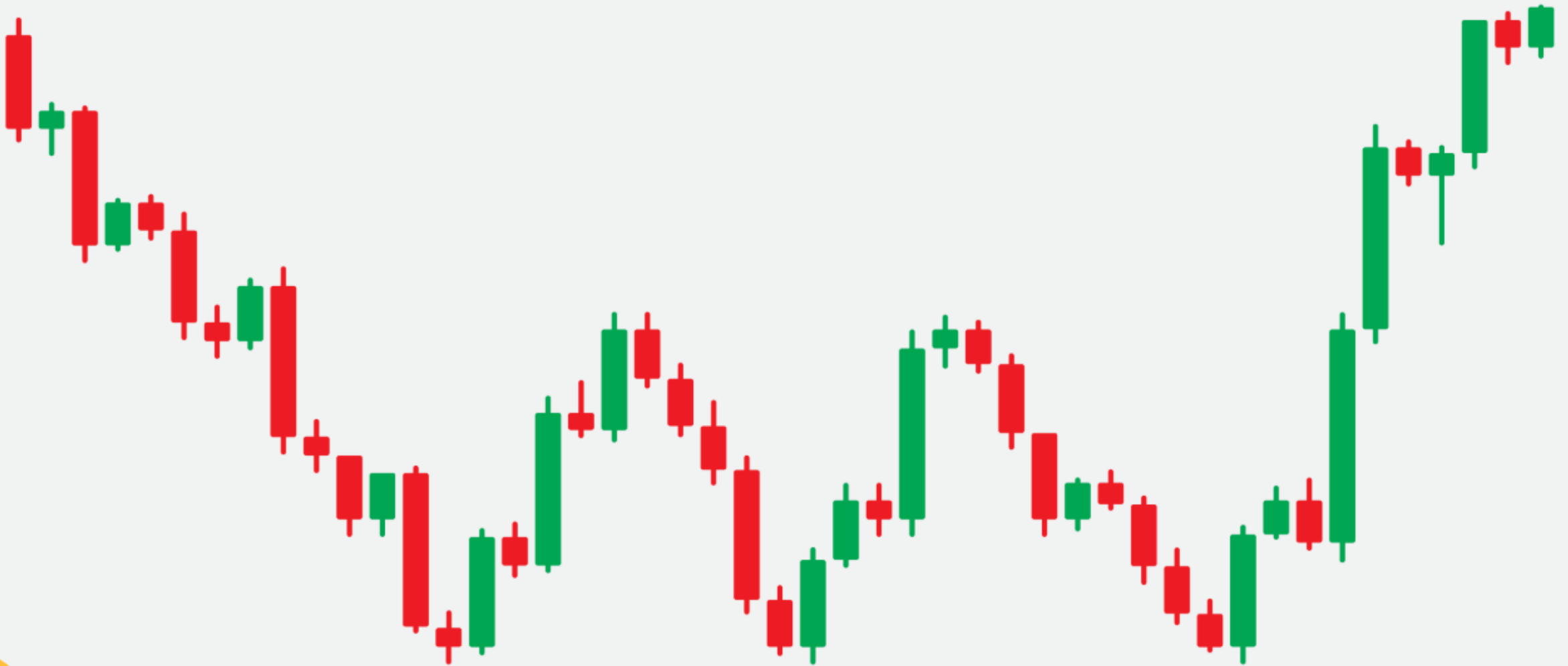


# What is Crypto Trade

Crypto trading involves buying and selling cryptocurrencies with the aim of profiting from price fluctuations, often using strategies like scalping or day trading, and can be done through exchanges or platforms. Crypto trading involves buying and selling digital currencies (like Bitcoin or Ether) on platforms called exchanges, aiming to profit from price fluctuations. You can either trade the underlying coins (spot trading) or speculate on price movements using contracts for difference (CFDs). To start trading cryptocurrencies, you first need to open a trading account with a reputable broker or exchange. Once your account is set up and funded, you can start trading. It's recommended to start with a demo account to practice trading without risking real money. How do you predict cryptocurrency prices?



# Crypto Trade Chart



**FREE**

**REGISTER**

**NOW**



# JOINING AMOUNT

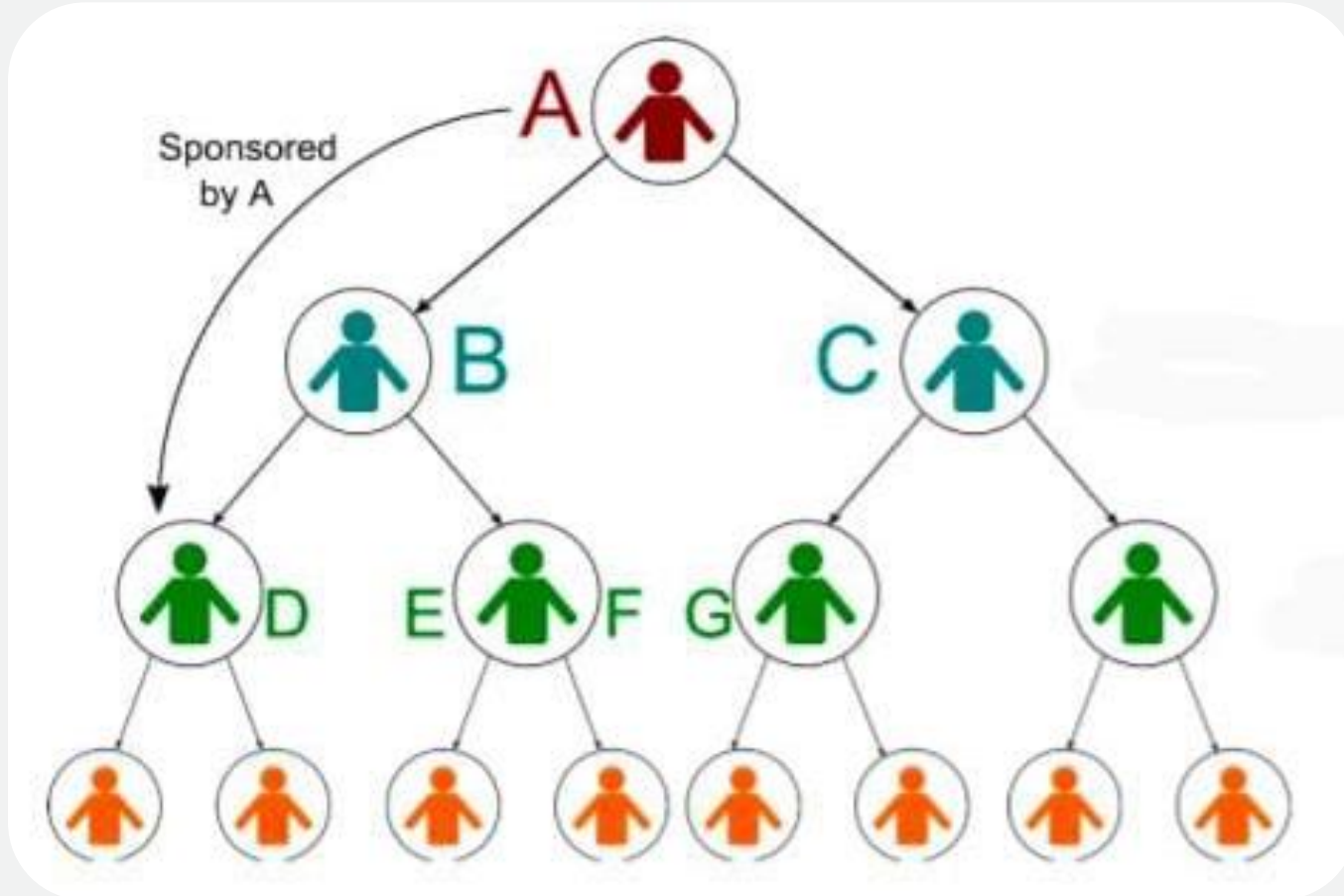


\$10



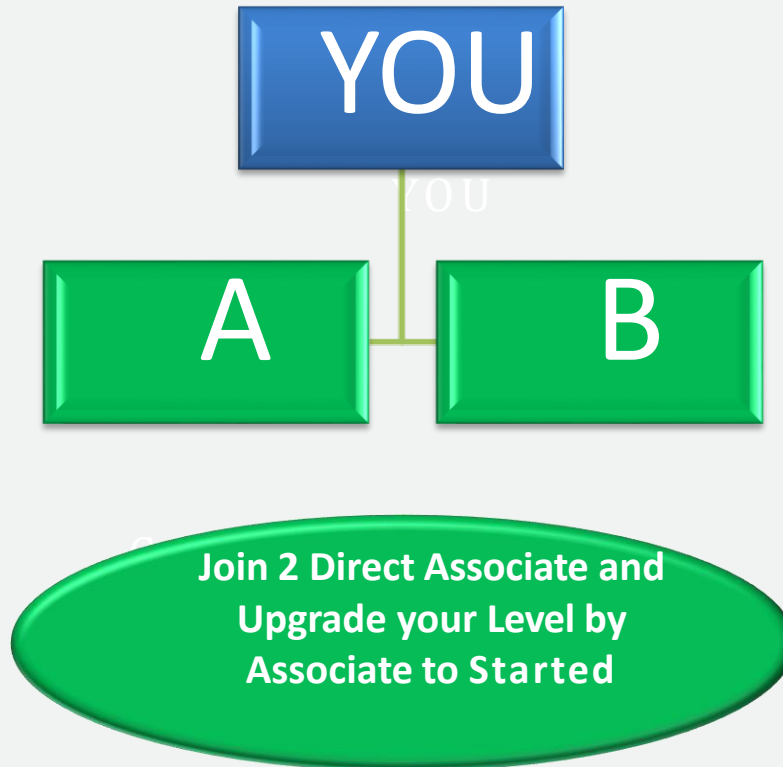
# Plan A

(5\$)



# LEVEL INCOME

YOU
2
4
8
16
32
64
128
256

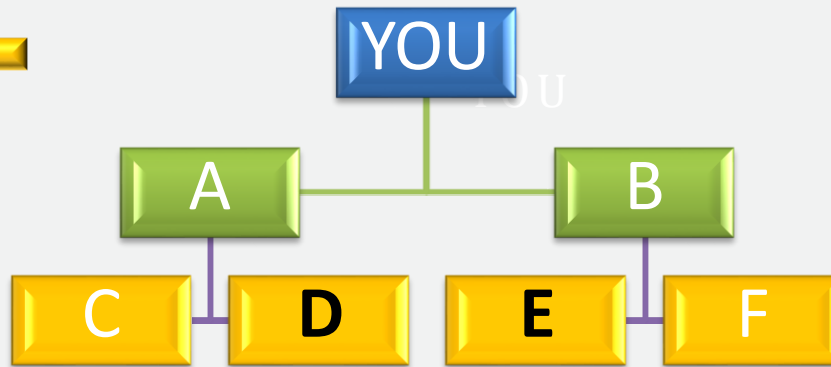


Started	
FROM	5\$
AMOUNT	$2 \times 5 = 10\$$
TOTAL AMOUNT	10\$
UPGRADE	5\$
<b>PROFIT</b>	5\$



# LEVEL INCOME

YOU
2
4
8
16
32
64
128
256

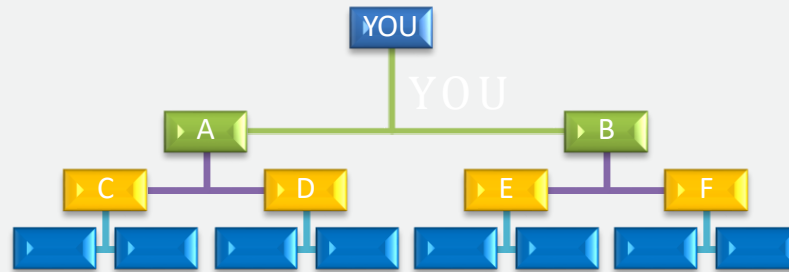


When 4 Person of your 2<sup>nd</sup>  
Level Become Started  
then you Become  
Affiliate

Affiliate	
FROM	5\$
AMOUNT	$4 \times 5 = 20\$$
TOTAL AMOUNT	20\$
UPGRADE	10\$
PROFIT	10\$

# LEVEL INCOME

YOU
2
4
8
16
32
64
128
256

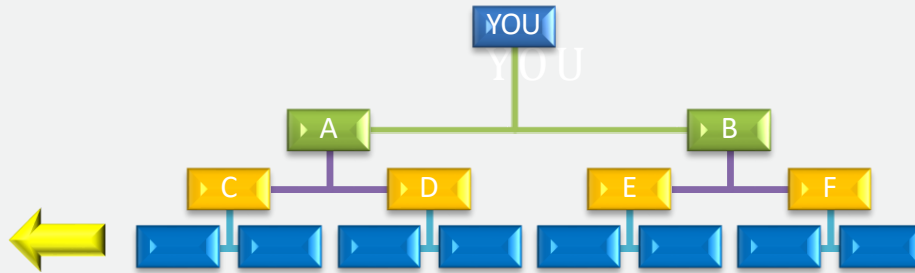


When 8 Person of your 3<sup>rd</sup> Level Become Affiliate then you Become Patron

Patron	
FROM	10\$
AMOUNT	$8 \times 10 = 80\$$
TOTAL AMOUNT	80\$
UPGRADE	40\$
<b>PROFIT</b>	40\$

# LEVEL INCOME

YOU
2
4
8
16
32
64
128
256



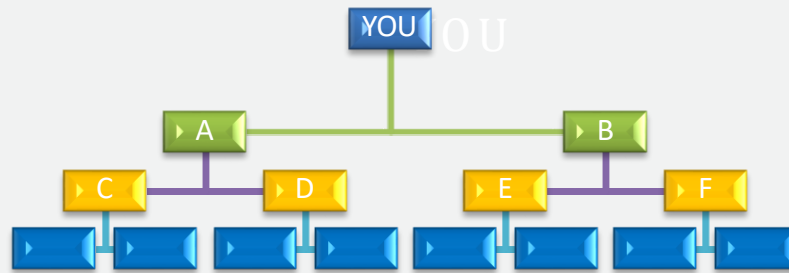
When 16 Person of your 4<sup>th</sup> Level Become Patron then you Become Partner

Partner	
FROM	40 \$
AMOUNT	$16 \times 40 \$ = 640 \$$
TOTAL AMOUNT	640 \$
UPGRADE	320 \$
<b>PROFIT</b>	<b>320 \$</b>



# LEVEL INCOME

YOU
2
4
8
16
32
64
128
256

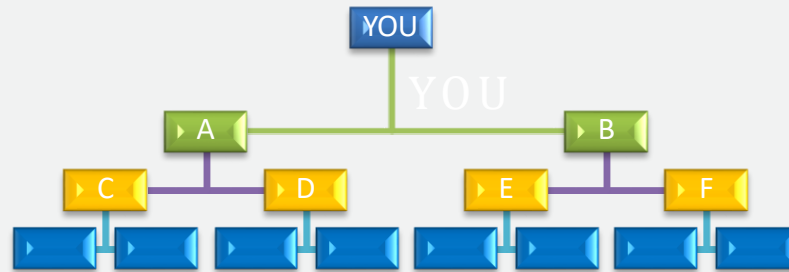


When 32 Person of your 5<sup>th</sup> Level Become Partner then you Become Devoted

Devoted	
FROM	320 \$
AMOUNT	$32 \times 320 \$ = 10240 \$$
TOTAL AMOUNT	10240 \$
UPGRADE	5120 \$
PROFIT	5120 \$

# LEVEL INCOME

YOU
2
4
8
16
32
64
128
256

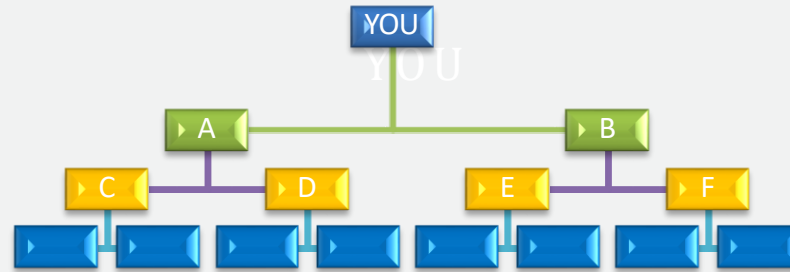


When 64 Person of your 6<sup>th</sup> Level  
Become Devoted  
then you Become Obsess

Obsess	
FROM	5120 \$
AMOUNT	$64 \times 5120\$ = 327680 \$$
TOTAL AMOUNT	327680 \$
UPGRADE	163840 \$
<b>PROFIT</b>	163840 \$

# LEVEL INCOME

YOU
2
4
8
16
32
64
128
256



When 128 Person of your 7<sup>th</sup>  
Level Become Obsess  
then you Become Super

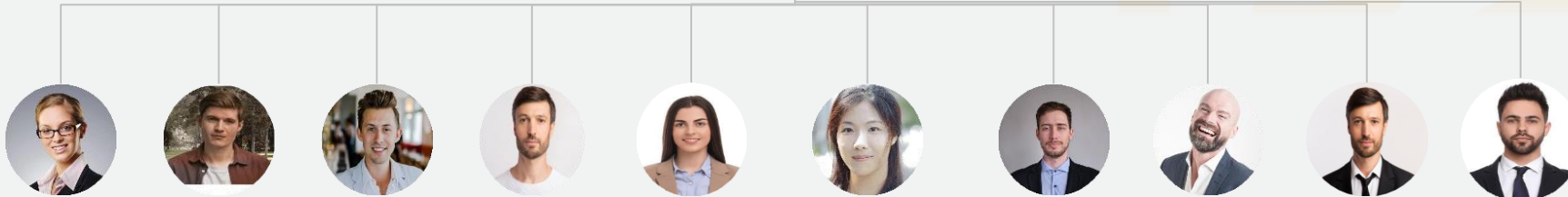
Super	
FROM	163840 \$
AMOUNT	128 x 163840 \$ =20971520\$
TOTAL AMOUNT	20971520 \$
UPGRADE	20971520 \$
<b>PROFIT</b>	<b>163840 \$</b>



# Plan B



(5\$)



**Global World**

# Working Plan (Level income)

LEVEL	FROM	AMOUNT	TOTAL AMOUNT	UPGRADE	PROFIT	NAME
1	2	5 \$	10 \$	5 \$	5 \$	Started
2	4	5 \$	20 \$	10 \$	10 \$	Affiliate
3	8	10 \$	80 \$	40 \$	40 \$	Patron
4	16	40 \$	640 \$	320 \$	320 \$	Partner
5	32	320 \$	10240 \$	5120 \$	5120 \$	Devoted
6	64	5120 \$	327680 \$	163840 \$	163840 \$	Obsess
7	128	163840\$	20971520 \$	-	20971520 \$	Super

# REWARD PLAN

LEVEL - 1	10 x 50% = 25 \$	1 ID
LEVEL - 2	100 x 20% = 100 \$	1 ID
LEVEL - 3	1,000 x 10% = 500 \$	1 ID
LEVEL - 4	10,000 x 5% = 2,500 \$	1 ID
LEVEL - 5	100,000 x 5% = 25,000 \$	2 ID
LEVEL - 6	1,000,000 x 5% = 250,000 \$	2 ID
LEVEL - 7	10,000,000 x 5% = 2,500,000 \$	2 ID

Total income = 2,778,125 \$

Total all income = 23,918,980 \$

Note :- 2 ID Direct compulsory for any income

[www.theglobalworld.online](http://www.theglobalworld.online)

[www.theglobaleworld.com](http://www.theglobaleworld.com)



# AUTO PLAN C

Sr.no	Team	Direct	Total Income
1	2	1\$	2\$
2	4	1\$	4\$
3	8	1\$	8\$
4	16	1\$	16\$
5	32	1\$	32\$
6	64	1\$	64\$
7	128	1\$	128\$
8	256	1\$	256\$
9	512	1\$	512\$
10	1024	1\$	1024\$

# AUTO PLAN C

Sr.no	Team	Direct	Total Income
11	2048	1\$	2048\$
12	4096	1\$	4096\$
13	8192	1\$	8192\$
14	16384	1\$	16384\$
15	32768	1\$	32768\$
16	65536	1\$	65536\$
17	131072	1\$	131072\$
18	265144	1\$	265144\$
19	524288	1\$	524288\$
20	1048576	1\$	1048576\$



[www.theglobalworld.online](http://www.theglobalworld.online)  
[www.theglobaleworld.com](http://www.theglobaleworld.com)

A yellow, rectangular sticky note is tilted slightly to the right. It has four yellow corner tabs. On the note, the words 'THANK' and 'YOL' are written in a black, hand-drawn, cursive font. Between them are two dots '..'. Below the text is a simple black smiley face consisting of two dots for eyes and a curved line for a mouth.

THANK  
.. YOL  
😊